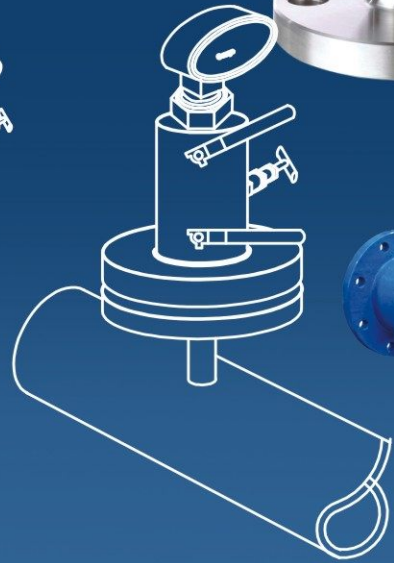
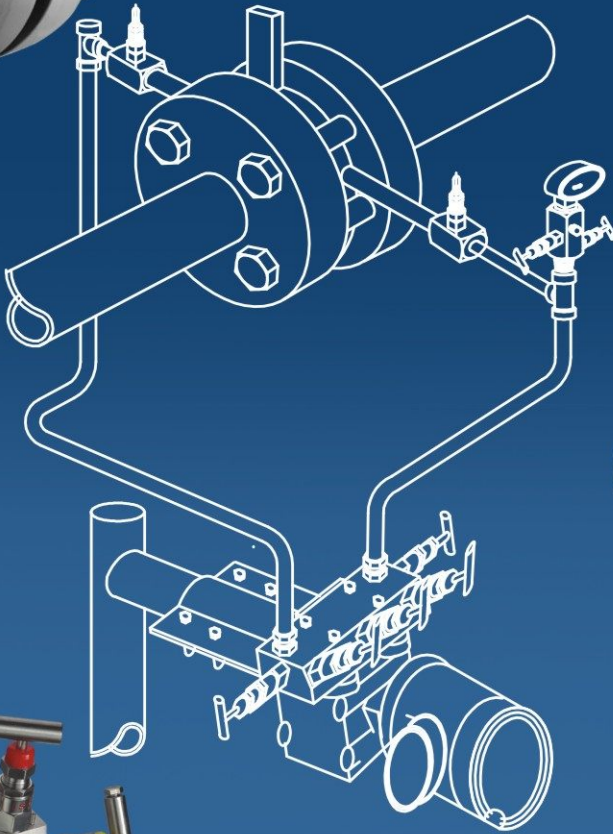




EXCELOK TECHNOLOGIES PTE LTD

Singapore





229



Certificate Number:
SG/08/0179786782

This is to certify that the Quality Management System of:
EXCELOK TECHNOLOGIES PTE LTD

of
21 Bukit Batok Crescent
#15-82 WCEGA Tower
Singapore 658065

has been assessed and registered by ACS Registrars Ltd against the following
Quality Management System Requirements:

ISO 9001:2008

The scope of registration is:

- 1) Design, Detail Engineering, Manufacturing & Supply of :
 - a) Flow Elements and Orifice Flanges
 - b) Instrumentation Valves, Manifold, Fittings & Accessories
 - c) Level Indicators
 - d) Pipeline Strainers
- 2) Design & Detail Engineering of Process Plants, Civil, Structural, Mechanical & Piping Systems

Signed by:

Date of Initial Assessment: 15/10/2008
 Date of Registration: 20/10/2008
 Date Reissued: 15/12/2017
 Date of Expiry: 14/09/2018

Whilst all due care and skill was exercised in carrying out this assessment, ACS Registrars Ltd accepts responsibility only for proven gross negligence. This is not a legal document and cannot be used as such. This certificate remains the property of ACS Registrars Ltd to whom it must be returned upon request. *Certificate validity may be verified at the address below.

ACSR Certification Pte Ltd
 66 Tannery Lane, #01-02E
 Sindo Building, Singapore 347805
 tel. 6841 5387 fax. 6524 5669
 info@acsregistrars.com.sg

ACS Registrars Ltd
 Sovereign House, 29 Reddick Hill,
 Sutton Coldfield, West Midlands B75 7BQ, UK
 tel. 0121-241-2299 fax. 0121-241-4623
 www.acsregistrars.com



Introduction

Excelok Technologies is a Singapore based Company founded by an Instrument Engineer with more than three decades of experience in Engineering, product design & development & installation and commissioning of Instrumentation and control system.

Our flow elements are manufactured in accordance with international standards for sizing & quality control procedure

We understand the critical role of the instrumentation Valves in the process industries in terms safety and environment protection.

Excelok Technologies is an ISO 9001:2008 certified company. Providing a quality product is the culture of everyone in the organization.



Needle Valves



Features :

SS 316 construction for corrosion resistance, full or reduced bore for excellent flow. Flexible 3 piece design. Anti blow out internally loaded stem for safety. 90° smooth action operation pipe seats for ease of use and minimum maintenance.

Physical Features :

Pressure Rating 400 Kg/ CM2

Material Options :

SS 316, Carbon Steel, Aluminium, Bronze, Hastalloy Monel, etc. Optional KEL-F, Polyman packing available with high pressure valves.

Standards : BS 5750

Tests :

Each Valve is tested with Nitrogen at 1000 PSI for Seat and Seal Leakage with a leakage rate of 0.1 Sec / Min.

Hydro Tests :

Performed with pure water at 1-1/2 Liters of the working pressure. Other tests like Helium, Sismic are available upon request.

End Connections :

Variety of end connections 1/4" to 1" NPT, BSP male or female threaded or 1/4", 3/8", 1/2" single or twin ferrule tube fitting ends.

Ball Valves

Valves are supplied in 2/3 piece design and connected as per customer requirements.

Available with Teflon, Delrin Peak seats.

- Range : 1/8" to 1" threaded. 1/8" OD to OD, 4mm OD to 25mm OD
- End Connections : NPT/BSPT/BSP
- MOC : SS 304, SS 316, BRASS, MONEL, HASTALLOY, TEFLON, CS



Tube Fittings

Excelok coupling and compression Ferrules are made from 316 stainless steel. other materials optional on request.

All common sizes of fittings will be stocked but specials can be made to order. The fittings are designed for tube sizes 1/16" to 1-1/2", 4mm to 38 mm, outside diameter of tube. Stud sizes are 1/8" to 2", NPT, API, ISO Paralal (BSPP) and ISO (BSPT)

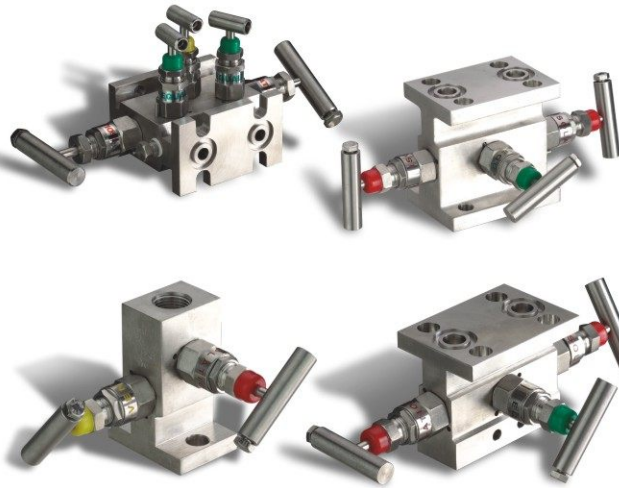


Instrument Manifolds

2-, 3- and 5-Way Manifold Valves IEC 61518 Complied

Manifold Valve Designs

R-Type (pipe to pipe in-line) manifolds are designed for differential pressure of flow recorder to impulse tubing. Connections are 1/2" NPT industry standard and 2-1/8" (54 mm) center-to-center dimension (Model for 2 3/16" & 2 1/4" center-to-center dimensions)



H-Type (dual flange, flange to flange)

manifolds bolt directly to the differential pressure instruments which eliminate the need for unnecessary piping, valves and fittings.

Specifications

Max. Pressure Rating (metal seated):

Up to 6,000 PSI @ 200°F (414 bar @ 93°C)

Pressure Rating at Max. Temperature:

PTFE – 4130 PSI @ 450°F (284 bar @ 232°C)

Grafoil – 1500 PSI @ 1000°F (103 bar @ 538°C)

Orifice Size: 0.156 inch (4.0 mm)

End Connections:

Male inlet and three 1/2-inch FNPT outlet ports, threaded or prepared for welding with std. or extended inlets Female inlet and three 1/2-inch FNPT outlet ports

T-Type (single flange, pipe to flange) manifolds

bolt directly to the differential pressure instruments which eliminate the need for unnecessary piping, valves and fittings. T-Type manifolds come complete with mounting kit for quick and easy installation to a pipe stand

Double Block & Bleed Manifolds

Excelok double block and bleed valves meet both instrument and piping engineer's Specifications, offering significant savings on space, weight and cost.

Specifications

Working Pressure: 6,000 or 9,000 PSI (400 or 600 bar)

Typical Applications

- Primary isolation
- Double block and bleed applications
- Pressure instrumentation devices
- Chemical injection
- Sampling
- Pressure equalization
- Venting

Typical Materials Body & End Flanges:

- Stainless steel
- Duplex steel
- Super Duplex

Seals:

- PEEK seats for excellent chemical, heat and wear resistance
- Viton o-rings for operation from 0°F to 400°F (-17.8°C to 204°C)
- Optional materials available for high temperature Service



Strainers

All types of Strainers are available, Sizes range from 1" – 24". Body materials include Cast Iron, Cast Steel, Stainless Steel, Alloy 20, GRP/FRP and Bronze. Exotic material such as Monel, Hastelloy, Super Duplex Stainless and Titanium or special coating is also available for those challenging applications. Pressure classes start at ANSI 125# and go up to ANSI 2500# in threaded, flanged or socket weld end connections, higher pressure classes and other end connections are also available.



Y-Strainers

- The Y-Strainer are equipped with a blow off port.
- A ball valve can be fitted to flush debris that is easily removable from the screen and exhaust to atmosphere or a drain system. This feature allows for easy cleaning without interrupting the process.

Basket Strainers

- Basket Strainers can be equipped with Bolted Covers, Hinged Covers Clamped Covers, a Davit Lifting Device or other Lifting Device to make removal of large heavy covers safe and efficient.
- Widespread list of options are available



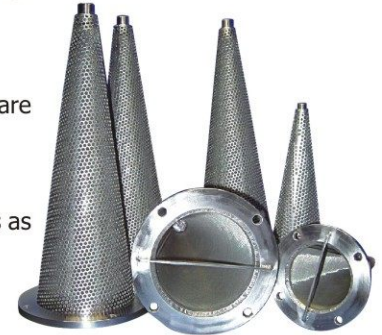
Tee Strainers

- Tee strainers are most commonly supplied with a range of graded filtration levels (fine to coarse or viceversa) to ensure that the system is running at the required cleanliness level when met with full load.
- Tee strainers feature either bolted cover or quick opening covers for application suitability.
- They can be mounted into vertical or horizontal piping and can be configured for right- angled applications



Conical Strainers / Temporary Strainers

- Basket, Cone, Plate, Reverse Flow and many different engineering designs are available.
- Standard Size and Pressure Rating is Stamped on Handle.
- We specialize in supplying standard replacement strainer screens and baskets as well as custom engineered designs or competitor units..



Level Indicator

Rugged construction for the roughest industrial applications. These products perform in high temperature, high pressure, high vibrations and many other applications requiring sturdy high quality design. Safe non-leak replacement for sight glasses. Easy to read from a distance. Add-on switches for alarms and level control. Calibration and maintenance on the transmitter and switches can be done without disturbing the process since they are mounted on the float chamber-external to the process.

Type of Level Indicator

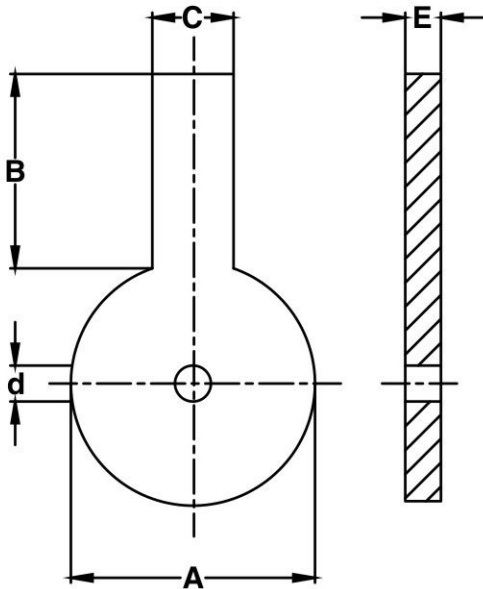
- Tubular Level Gauges
- Reflex & Transparent Level Gauges
- Board & Flot Type Level Indicator
- Flot Type Magnetic Level Indicator
- Dow Therm Level Indicator
- Top Mounted Magnetic Level Indicator
- Purge Type Level Indicator

Advantages

- * No Re-doing of piping to change a level setpoint.
- * Eliminate leak-prone bridge assemblies.
- * Installed in Hazardous areas.
- * Customizable for extreme applications.



Dimensions



ORIFICE PLATES

The **FLOW CONSULTANT** Software by R.W. Miller is used for flow element sizing

Bore calculations in compliance to ISO, ISA or AGA will be provided.

Standard construction material are 316SS with other materials available as required.

Upstream side of handle is marked "Upstream".
and Tag number, line size, flange rating, bore and material.

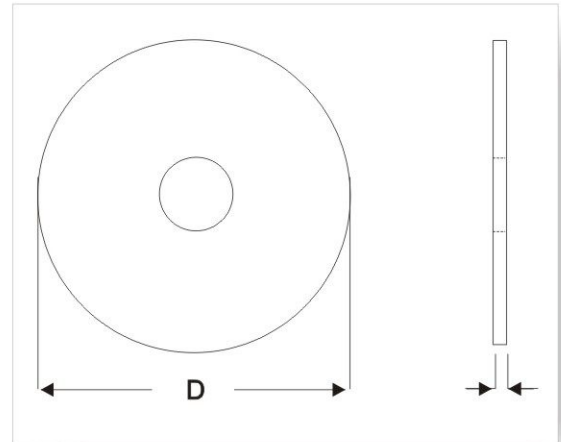
Dimensions(inches)

LINE SIZE	150# ANSI A	300# ANSI A	600# ANSI A	900# ANSI A	1500# ANSI A	2500# ANSI A	B	C	E
1/2"	1-7/8"	2-1/8"	2-1/8"	2-1/2"	2-1/2"	2-3/4"	4"	1"	1/8"
3/4"	2-1/4"	2-5/8"	2-5/8"	2-3/4"	2-3/4"	3"	4"	1"	1/8"
1"	2-5/8"	2-7/8"	2-7/8"	3-1/8"	3-1/8"	3-3/8"	4"	1"	1/8"
1-1/2"	3-3/8"	3-3/4"	3-3/8"	3-7/8"	3-7/8"	4-5/8"	4"	1"	1/8"
2"	4-1/8"	4-3/8"	4-3/8"	5-5/8"	5-5/8"	5-3/8"	4"	1-1/4"	1/8"
3"	5-7/8"	5-7/8"	5-7/8"	6-5/8"	6-7/8"	7-3/4"	4"	1-1/4"	1/8"
4"	6-7/8"	7-1/8"	7-5/8"	8-1/8"	8-1/4"	9-1/4"	4"	1-1/4"	1/8"
6"	8-3/4"	9-7/8"	10-1/2"	11-3/8"	11-1/8"	12-1/7"	5"	1-1/4"	1/8"
8"	11"	12-1/8"	12-5/8"	14-3/8"	13-7/8"	12-1/2"	5"	1-1/4"	1/8"
10"	13-3/8"	14-1/4"	15-3/4"	17-1/8"	17-1/8"	18-3/4"	6"	1-1/4"	1/8"
12"	16-1/8"	16-5/8"	18"	19-5/8"	20-1/2"	21-5/8"	6"	1-1/4"	1/4"
14"	17-3/4"	19-1/8"	19-3/8"	20-1/2"	22-3/4"	-	6"	1-1/4"	1/4"
16"	20-1/4"	21-1/4"	20-1/2"	22-5/8"	25-1/4"	-	6"	1-1/4"	1/4"
18"	21-1/2"	23-3/8"	22-5/8"	25"	27-5/8"	-	6"	1-1/4"	1/4"
20"	23-3/4"	25-5/8"	29-5/8"	27-3/8"	29-5/8"	-	6"	1-1/4"	3/8"

Orifice Plate & Orifice Flange

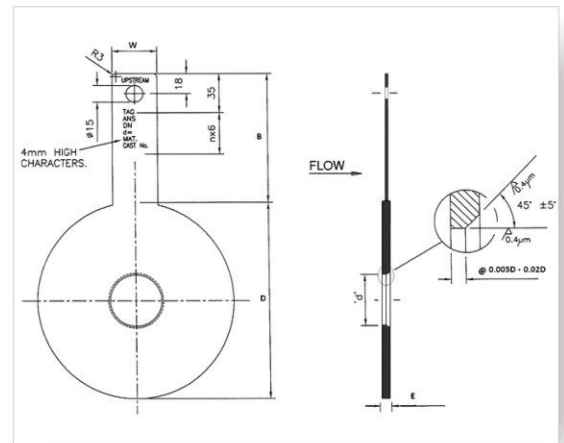
Universal Type: Model -E788U

Manufactured for use with RTJ plate holders and are interchangeable with most orifice fittings. Each plate is carefully manufactured to meet or exceed AGA Report #3, ISA, ISO and A.S.M.E. recommendations



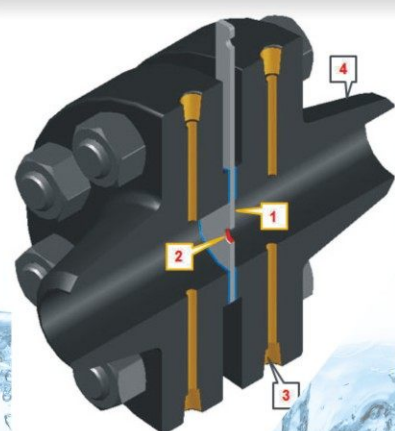
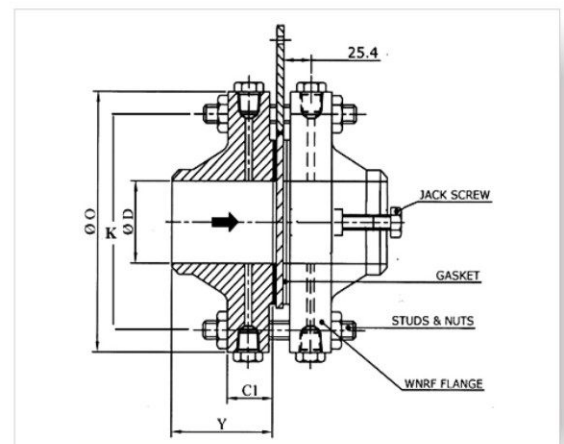
Paddle Type: Model-E780P

Manufactured for use with raised face orifice flanges or orifice holding blocks. Each plate is carefully machined to meet or exceed standards set by AGA, ISA, ISO, ANSI, ASME and API recommendations. Concentric, eccentric or segmental bores are calculated and precision machined to customer requirements.



Weldneck OFU : Model -E798W

Each OFU is manufactured to the required standard and tolerance of ASME B16.36 The assembly comes with a complete set of bolts, nuts and gaskets.



**Instrumentation
Accessories**



EXCELOK TECHNOLOGIES PTE LTD

No. 21, Bukit Batok Crescent #15-82 WCEGA Tower, Singapore-658 065.
Tel:+65-65671577 | sales@excelok.com.sg, www.excelok.com.sg